



37 & 37A Third Avenue, Klemzig



**APPLICATIONS NOW CLOSED**

Brand new homes waiting for you!

Two very comfortable homes with clean lines and uncluttered space recently completed by Sterling Homes. Choose which floorplan suits your needs and lifestyle!

Be the first occupants to enjoy the following benefits both these fantastic homes provide -

A master bedroom, ensuite and walk-in-robe together with built-in robes in bedrooms 2 and 3.

A handy 3-way family bathroom.

A well proportioned laundry with built-in linen cupboards, room for an under-bench washing machine and with a sliding glass door that provides easy access to the yard.

A stunning modern kitchen with a 900mm gas cooker and

3 2 2

Price \$540.00 - \$570.00 per week

Property Type Rental

Property ID 1763

**Agent Details**

Matt Scarce - 0411 185 205

**Office Details**

Tusmore  
457 Greenhill Road Tusmore  
SA 5065 Australia  
08 8332 1488

900mm oven, a dishwasher, a large walk-in-pantry and a convenient breakfast bar overlooking the family room and dining area.

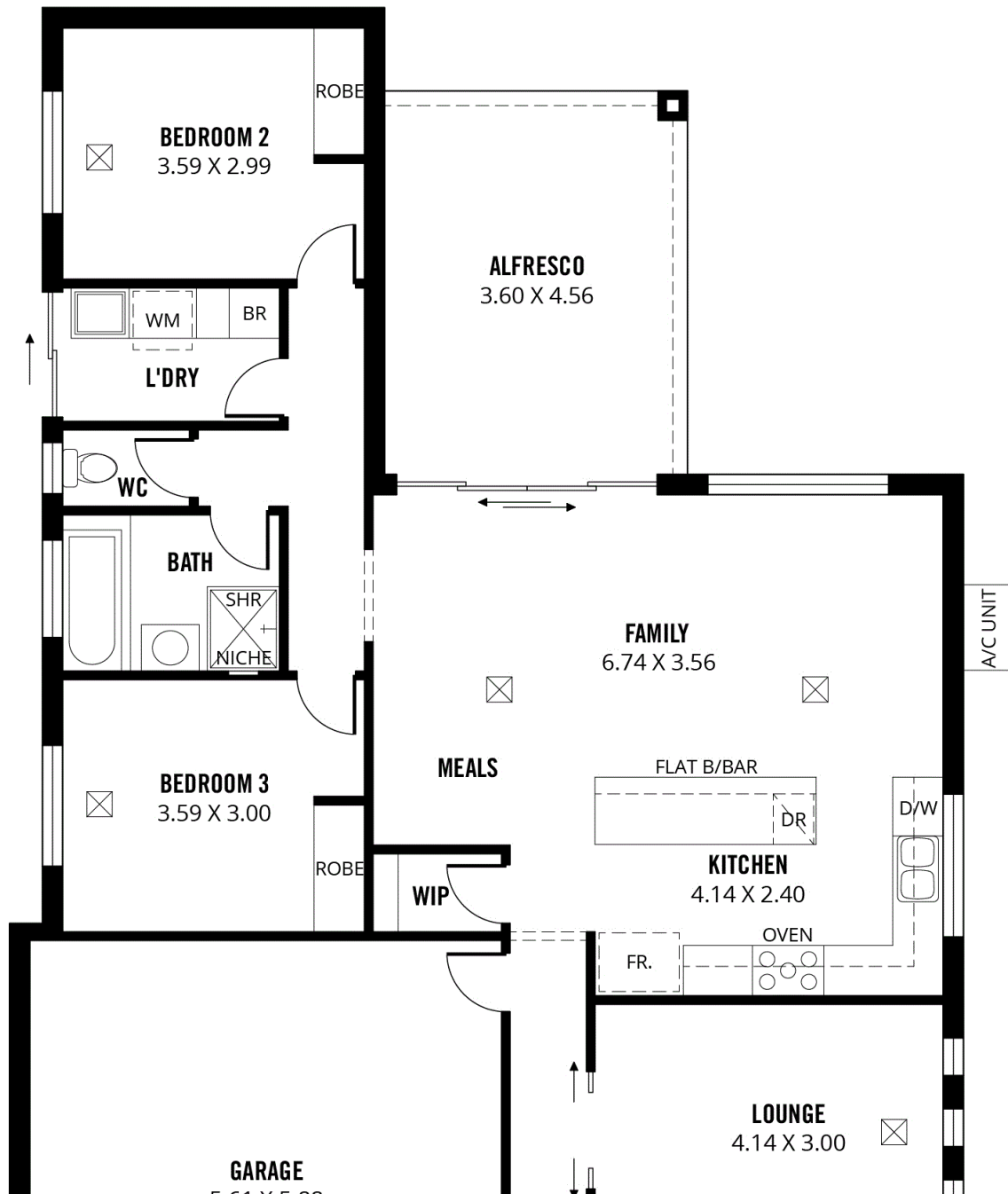
Glass sliding doors provide access to the rear landscaped courtyard which is perfect for year round entertaining.

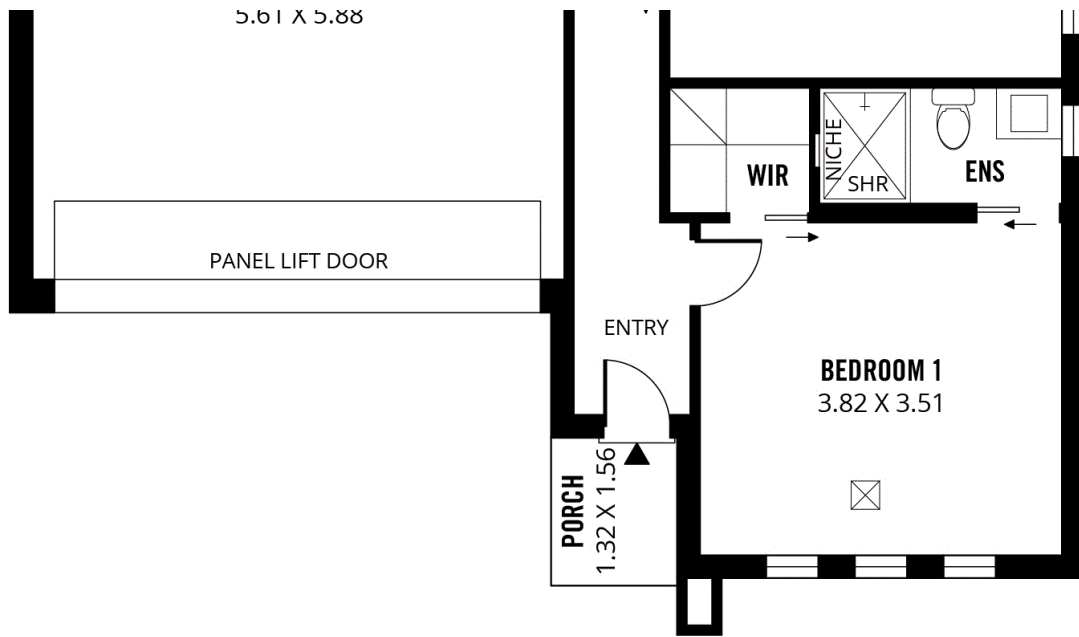
A double garage with internal access.

Ducted reverse cycle air-conditioning.

Sorry NO Pets.

The above information provided has been furnished to us by the vendor/s. We have not verified whether or not that information is accurate and do not have any belief in one way or the other in its accuracy. We do not accept any responsibility to any person for its accuracy and do no more than pass it on. All interested parties should make and rely upon their own inquiries in order to determine whether or not this information is in fact accurate.

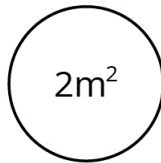




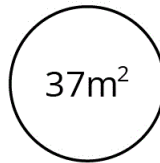
**TOTAL**



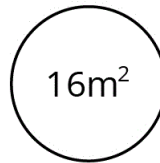
Living



Porch



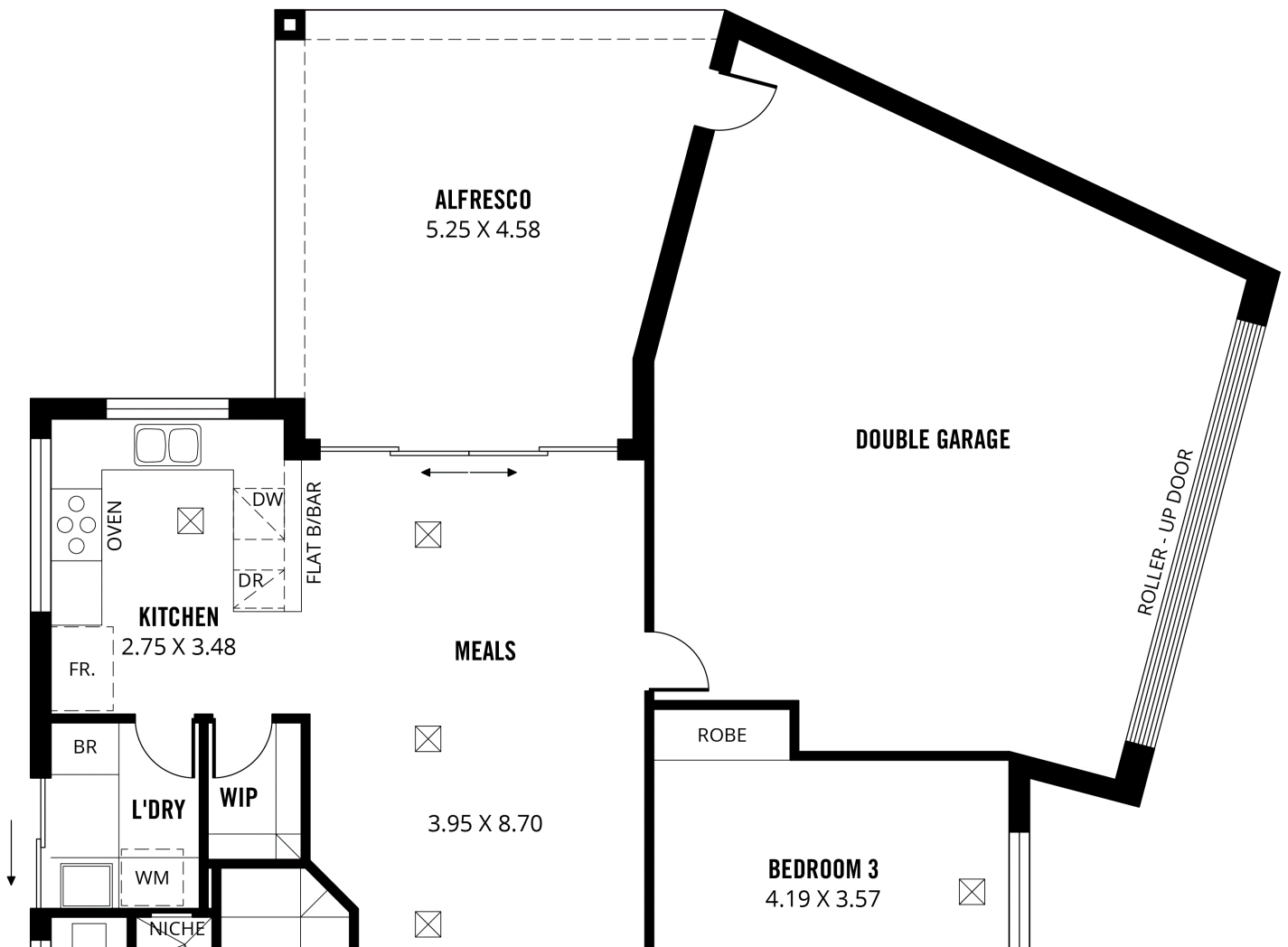
Garage

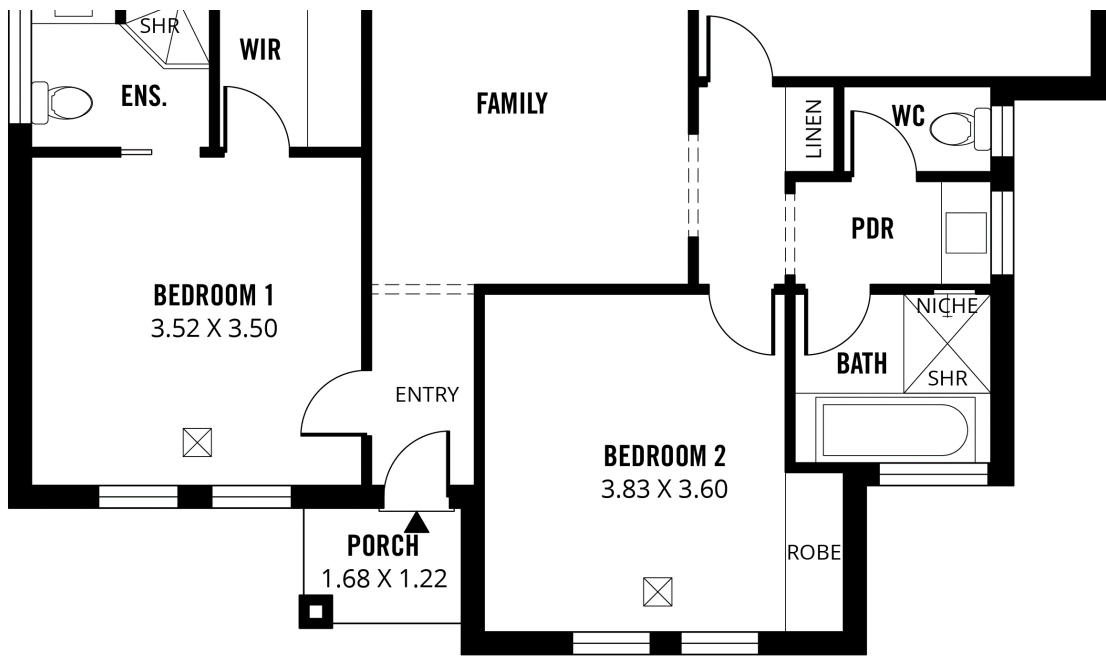


Alfresco

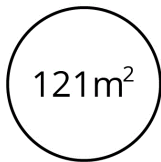


Scale in metres. This drawing is for illustration purposes only. All measurements are approximate and details intended to be relied upon should be independently verified. Produced by **The Fotobase Group**

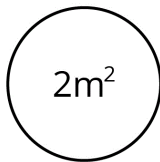




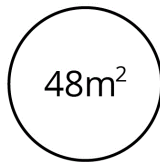
**TOTAL**



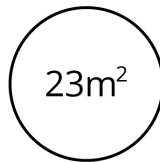
Living



Porch



Double  
Garage



Alfresco



Scale in metres. This drawing is for illustration purposes only. All measurements are approximate and details intended to be relied upon should be independently verified. Produced by **The Fotobase Group**